

Thank you for selecting a DuctSox System. This guide will be helpful for the installation of a Stainless Steel V-Track System. Sections of fabric will be labeled, assembled, bagged, and boxed for shipping. More complicated systems will include a CAD detail of the system identifying what is in each package.

## Overview

### Inventory

The first step on any installation project is to read through this guide thoroughly and review the components that need to be installed. The best way to do this is to review the drawings of the project while reading the guide, including the CAD detail if applicable.

### Shipping/Receiving

In some cases the DuctSox support system is delivered to the job site ahead of the DuctSox fabric sections. Depending on the size of a project or order, a DuctSox system will be shipped by common courier in a single brown box or several boxes. Larger orders will be shipped in crates by a common freight courier. Each DuctSox length should be packaged into individual plastic bags and labeled according to size and number of pieces. Other markings or labeling may also be incorporated for larger or more complicated systems. Be sure you have determined all boxes are accounted for.

### Unpacking

Inspect shipment carefully and make sure all pieces are accounted for. Account for everything by emptying the box and examining all contents. Note any missing or damaged pieces listed on the Bill of Lading.

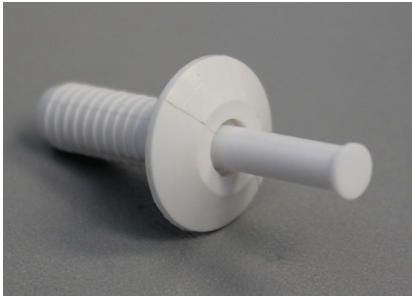
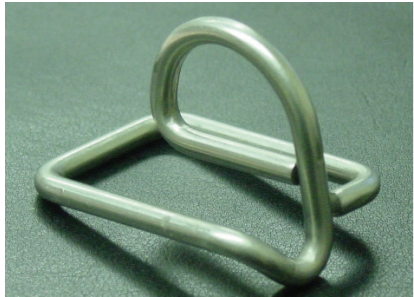
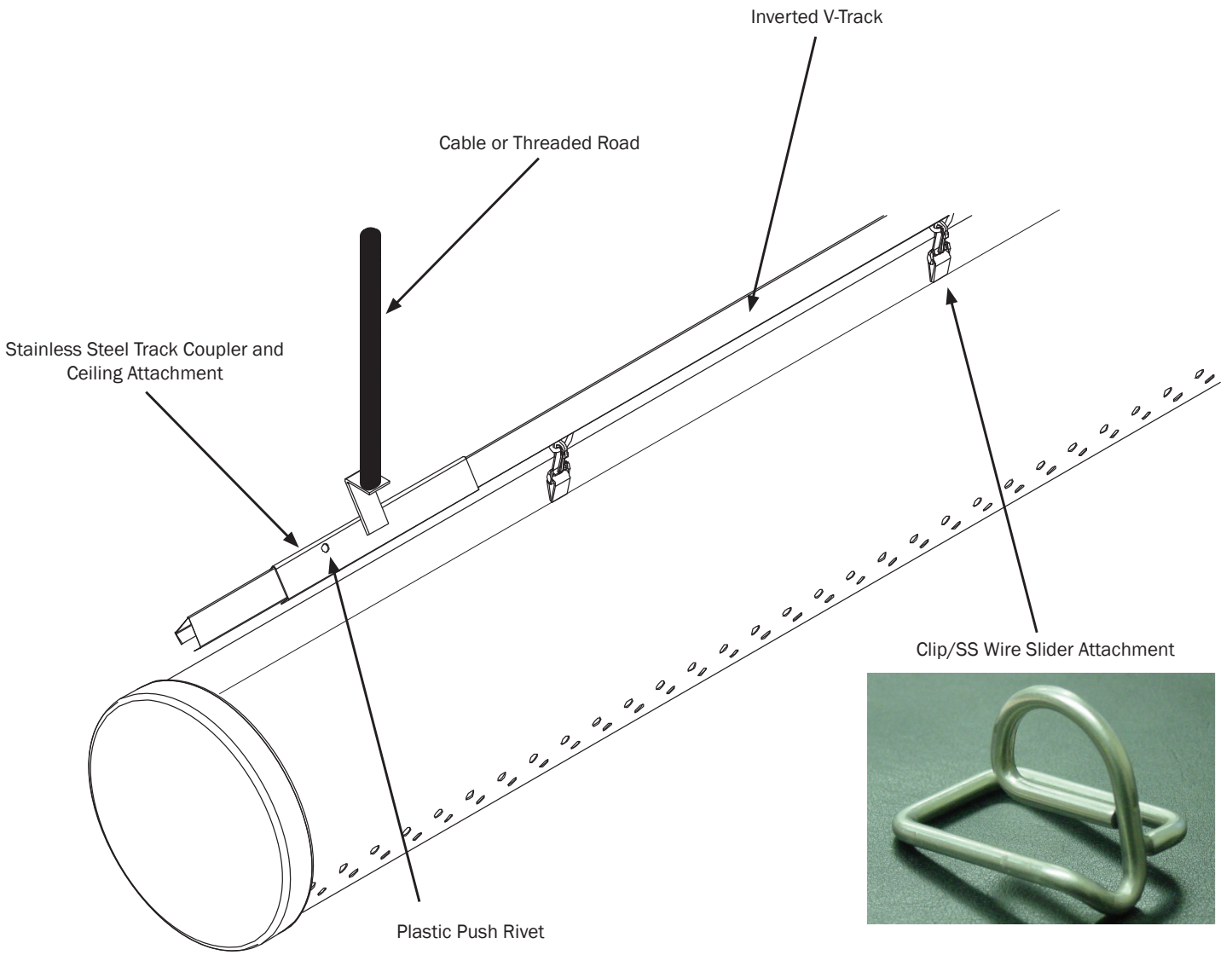
### Labeling

Each DuctSox section will be marked with the size and section number either inside the belt of the inlet or on a tag inside the DuctSox near the zipper. The marking shall be the diameter, section length and total length. If custom labeling has been used, locate an identification sheet that will be included with the delivery.

### Equipment Required:

- Drill
- Level
- Tape measure
- Marker or pencil
- Flat (standard) screwdriver

# Component Details



# Installation Steps

1. Review materials in box
2. Prepare metal inlet collar for fabric connection
3. Identify the location to install supports
4. Install and assemble ductsox components
5. Start up AHU/adjust ductsox fitment
6. Balance airflow/AFD

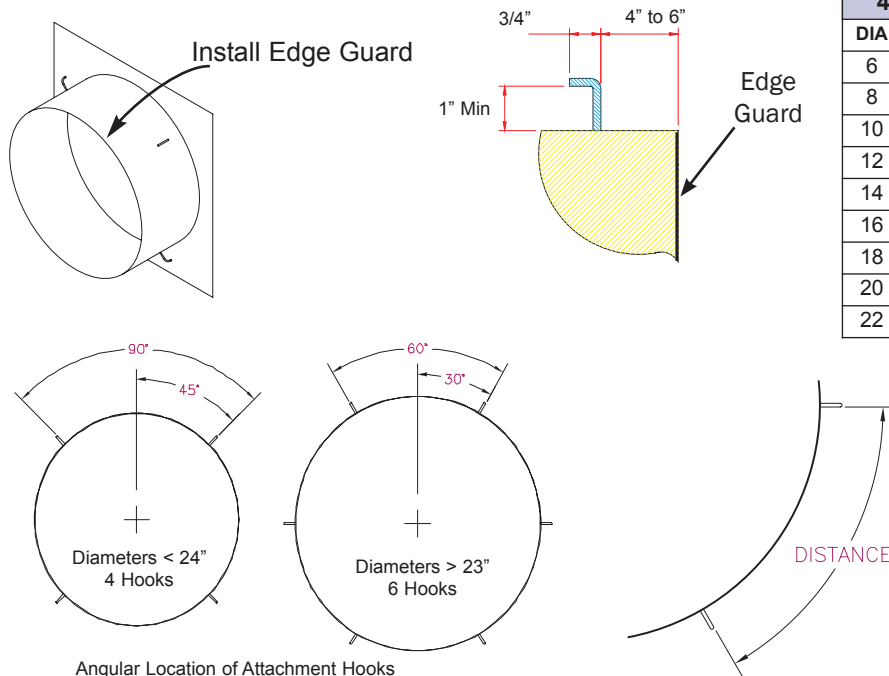
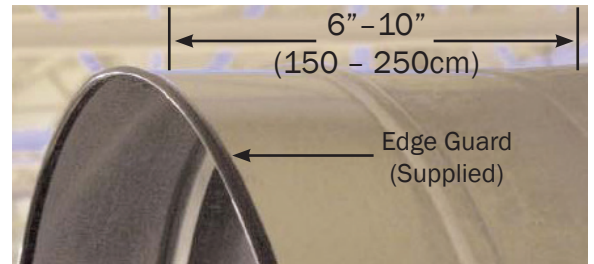
## Step 1

**Review materials in box, including the CAD drawing and installed location of the DuctSox. READ INSTRUCTIONS THOROUGHLY BEFORE BEGINNING.**

## Step 2

### Prepare metal inlet collar for fabric connection.

- Confirm inlet air supply location.
- Confirm inlet air supply size.
- DuctSox inlets are manufactured 1/2" (12mm) larger than specified to fit over metal inlet collar.
- Metal collar length should be 6" - 10" (150 to 250cm) for secure fabric attachment. Inlet collar will need hooks as outlined in tables below.
- Edge Guard (provided) should be installed on the edge of the metal collar to reduce fabric wear from the metal edge.

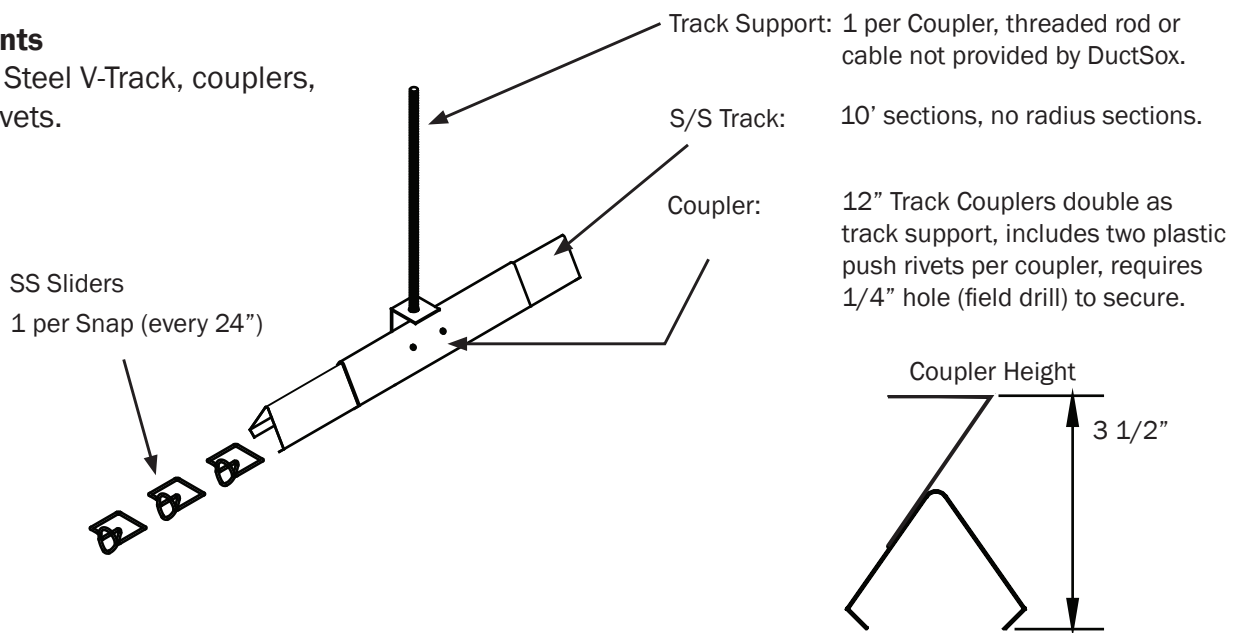


4 HOOKS		6 HOOKS	
DIA	SPACING	DIA	SPACING
6	4.7"	24	12.6"
8	6.3"	26	13.6"
10	7.9"	28	14.7"
12	9.4"	30	15.7"
14	11.0"	32	16.8"
16	12.6"	34	17.8"
18	14.1"	36	18.9"
20	15.7"	38	19.9"
22	17.3"	40	20.9"
		42	22.0"
		44	23.0"
		46	24.1"
		48	25.1"
		50	26.2"
		52	27.2"
		54	28.3"
		56	29.3"
		58	30.4"
		60	31.4"

### Step 3a

#### Track & Components

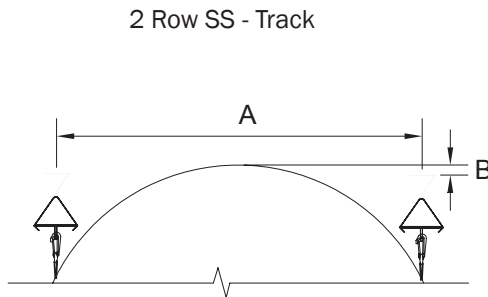
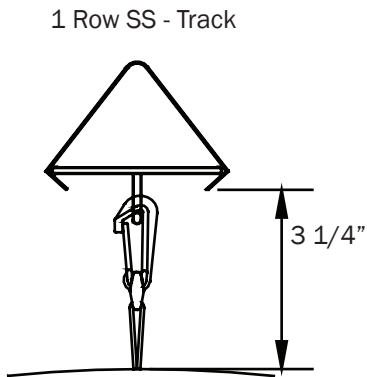
Includes Stainless Steel V-Track, couplers, and plastic push rivets.



### Step 3b

#### Installation of Track & Components

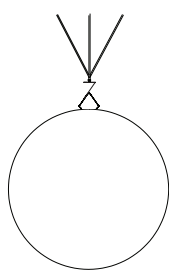
Identify S/S Track and Coupler locations prior to starting. Inverted “V” stainless steel track with wire sliders and a coupler/support attachment for threaded rod or cable was developed specifically for USDA applications. As detailed below, the installation consists of installing anchor points continuously above the track by using either cable or threaded rod.



Diameter (inches)	A	B
12	10.4	-3.75
16	13.8	-2.75
20	17.4	-1.75
24	20.8	-0.75
28	24.2	0.25
32	27.8	1.25
36	30.2	2.25
40	34.6	3.25
44	38.2	4.25
48	41.6	5.25
52	45	6.25
56	48.4	7.25
60	52	8.25
64	55.4	9.25
68	58.8	10.25
72	62.4	11.25

- Determine required installation elevation and location (from above data).
- Anchor cable or threaded rod type to the ceiling.
- Hang and connect sections of track using support cables/couplers.

Note: Steel track length is 10 ft and the coupler/support needs to be installed at the beginning and end of each run.

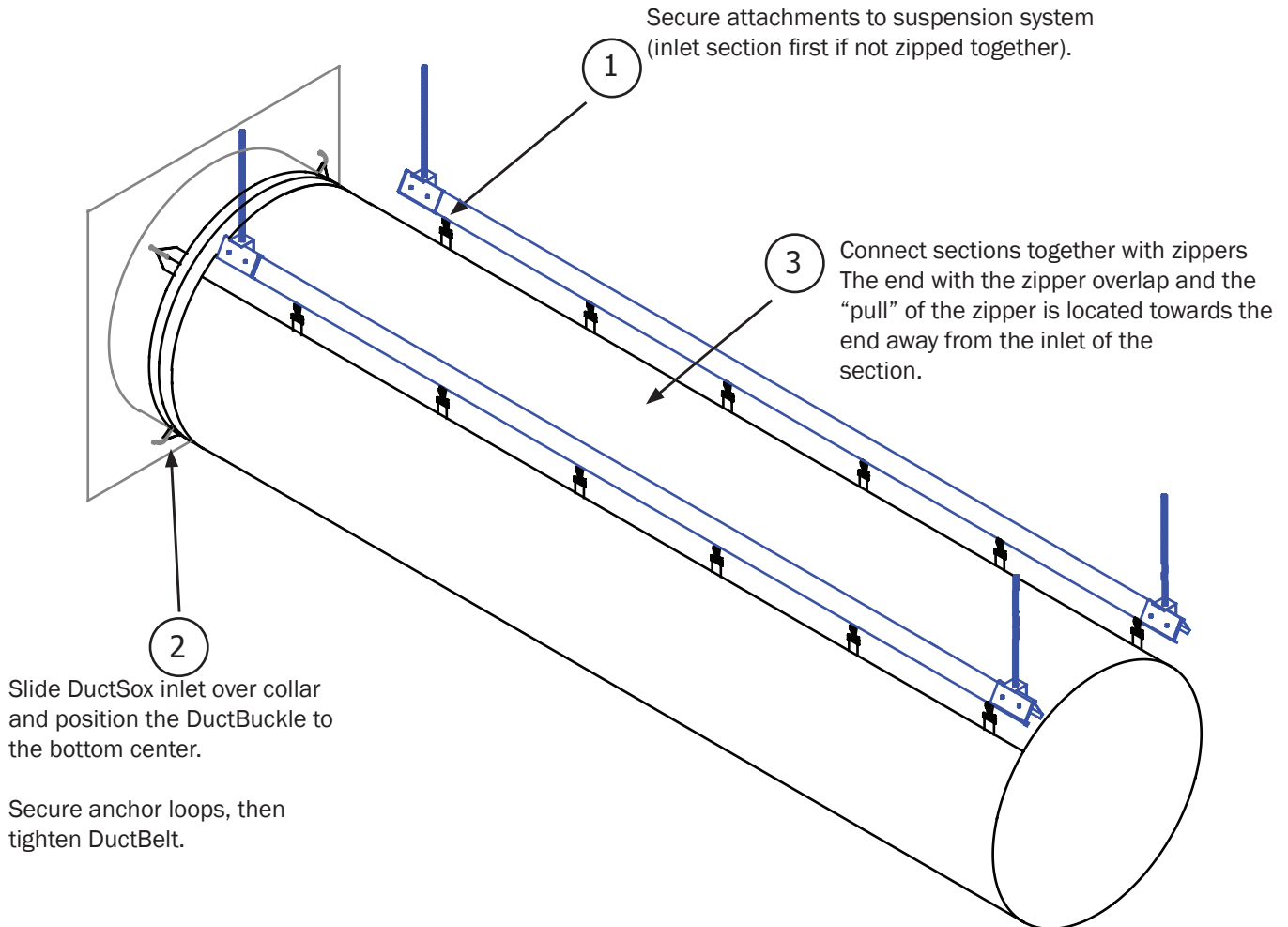


An alternative to hanging the Support Rods as shown above, support cables can be hung from the sides of the track along with angled cables in-line with the track. See graphic on the left.

## Step 4

### DuctSox Fabric Installation

- Do not install DuctSox system until the building construction is completed and site is clean.
- Confirm centerline dimensions and/or inlet types before unpacking and installing the DuctSox.
- During installation, use caution in all steps to keep the DuctSox clean.
- Larger systems may be packaged separately. If system includes T fittings, or if section details vary, each package will include a CAD detail revealing which sections are included in the package. Each DuctSox section is labeled on each zipper (ends) with details including job #, diameter, length and piece number of that particular section.



## Step 5

**Start Up AHU.** Turn on the AHU and inflate the DuctSox System. Check all slider attachments and sections to ensure system is inflating properly. If required, move sliders to eliminate puckering at binding locations. If lengths do not fit properly, double check all field measurements and compare to drawings. If all measurements are correct, contact your DuctSox factory rep to discuss options.

## Step 6

**Air Balancing.** System must be balanced to design CFM and static pressure immediately after installation. Most DuctSox Systems include a zipper at the inlet location for easy access to monitor flow.

If the fabric is fluttering after balancing, please contact your factory rep immediately. Solutions to the fluttering include adjusting the Adjustable Flow Device (AFD), adding AFDs, or other solutions that would result in a less turbulent airflow.

## Laundering Instructions

Sedona-Xm, TufTex, Verona, DuraTex, Microbe-X, Rx, and Stat-X fabrics:

- Remove the DuctSox fabric from your system, being sure to unzip all sections. Take care in recording where each section was installed.
- Turn soiled side out, soak in cold water for 30 minutes.
- Wash cold, gentle cycle.
- Rinse thoroughly (repeat cycle if water/DuctSox still soiled).
- Drip dry or no-heat tumble dry.





If any questions arise regarding the installation of your  
Stainless Steel V-Track System, contact us.

**866-382-8769 or 563-588-5300**

**DUCTSOX**<sup>®</sup>  
*Textile Air Dispersion Products*

9866 Kapp Court ■ Peosta, IA 52068  
Ph: 866-382-8769 or 563-588-5300 ■ Fax: 563-588-5330  
[www.ductsox.com](http://www.ductsox.com)

© 2015 DuctSox Corp.  
DSSSVTIG0315A